

Fire Evacuation plan as at December 2025

Signals	
Signal for fire evacuation	Continuous bell old building. Two tone siren new building
Signal for bomb evacuation	As above
Signal for all-clear	Bells stop. Verbal confirmation.

Assembly points - fire evacuation	
Fire evacuation assembly point A	Playgrounds by fence line see plan.
Fire evacuation assembly point B	Lawford Green Car park

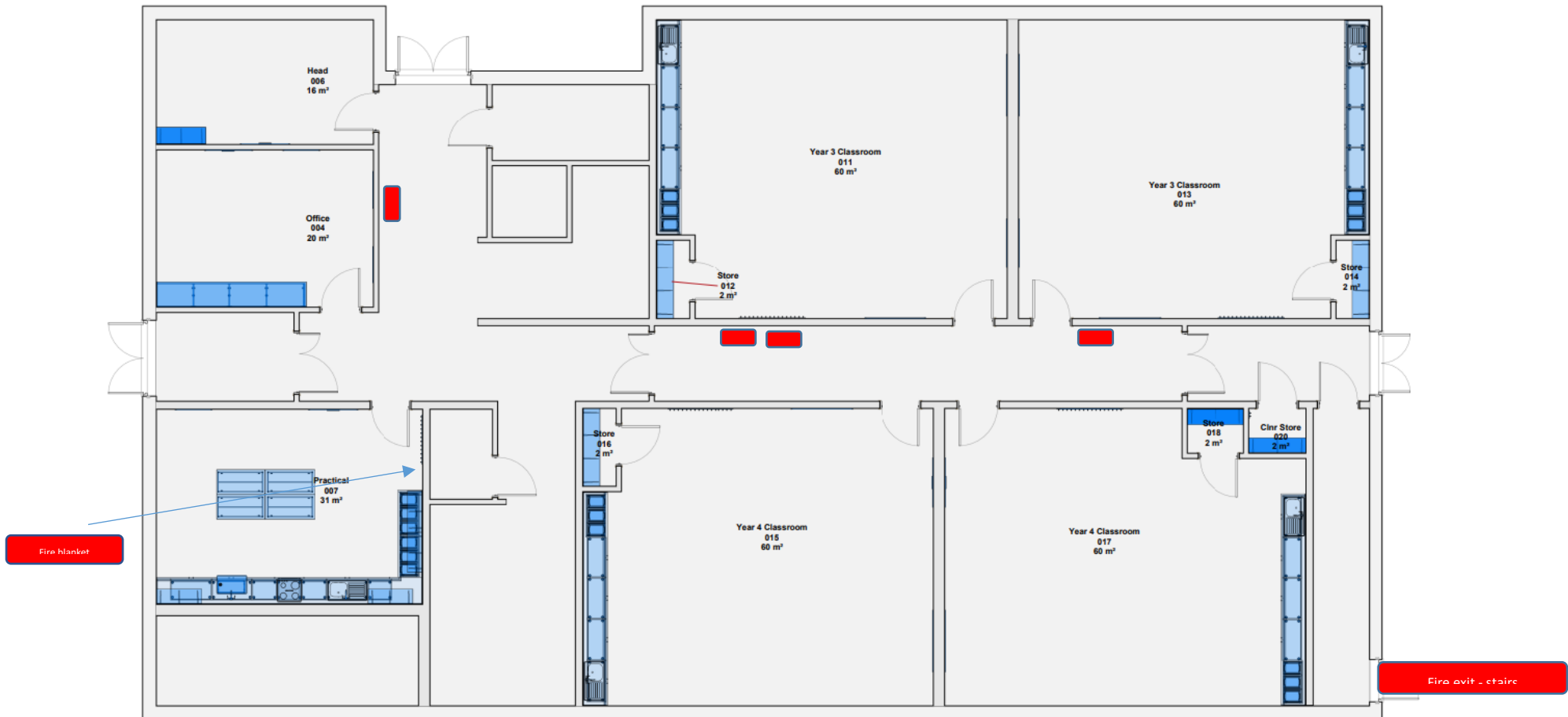
Assembly points - bomb evacuation	
Bomb evacuation assembly point A	Top of school field
Bomb evacuation assembly point B	Lawford Green Car park

If the school has been evacuated and pupils are not able to return to school (or go home) it may be possible to relocate temporarily to another building (e.g. buddy school or place of safety).

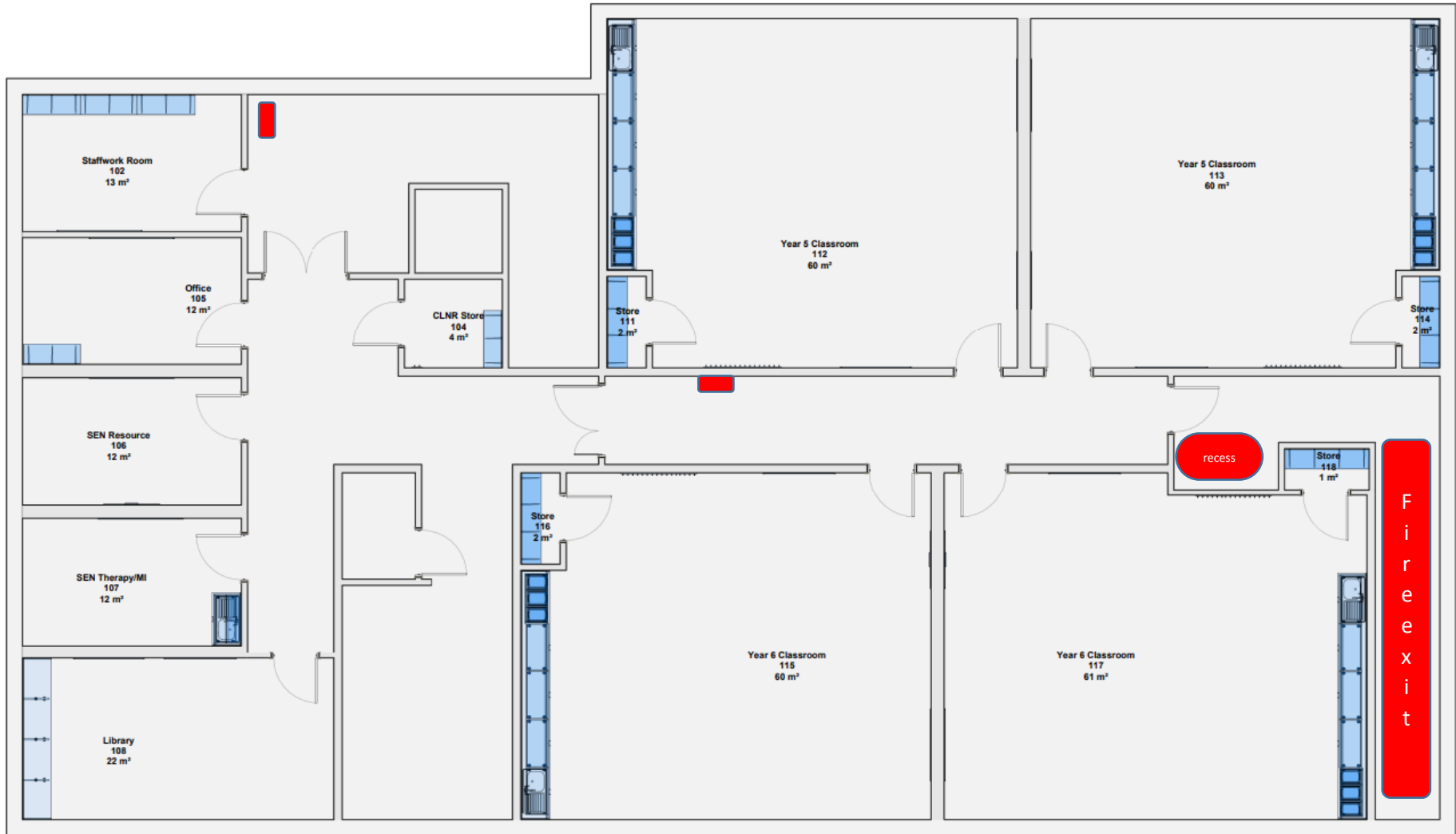
Pre-identified buddy school / place of safety / rest centre	
Name of premise	St Mary's Lawford Church
Type of premise	Church
Contact name and details of key holder(s)	Church Warden – Megan Howes 07855436719
Address	Church Hill, Lawford, Manningtree CO11 2JX

Directions / map	School walks there regularly
Estimated travel time (walking, with pupils)	10 – 15 minutes
Estimated travel time (by coach, with pupils)	N/A
Capacity	250 in church and further c.30 in hall
Capacity (sleeping)	nil
Facilities / resources	Hall, seating , toilets. WiFi
Notes	Only for very short period.

Fire Plan - downstairs – new build



Fire Plan – New build Upstairs call point by staff PPA room



Original building:

